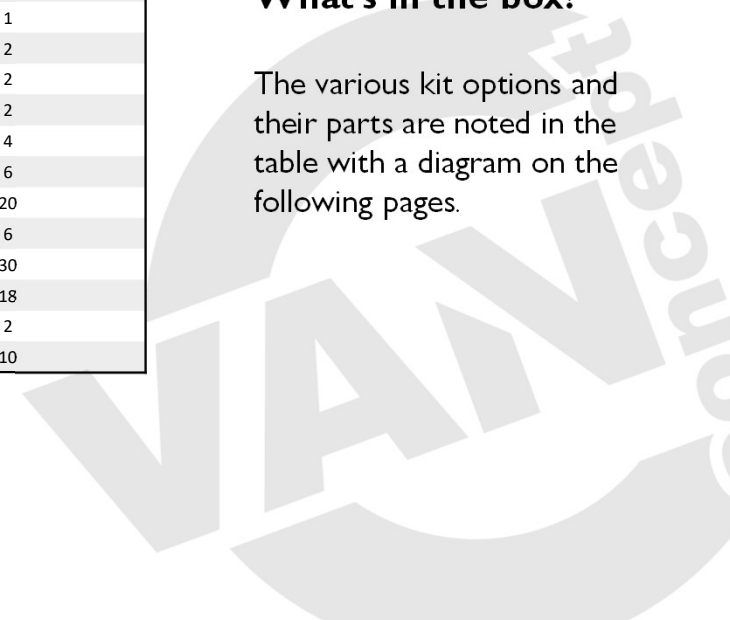


**CRUX-0059  
VERTICAL STRUT KIT - VW CRAFTER '17- & MANTGE '17-**

No.	Part No.	Description	Quantity
1	SMW-0211	Bed Strut Vertical Front	2
2	SMW-0213 LH	Bed Strut Vertical Rear LH	1
3	SMW-0213 RH	Bed Strut Vertical Rear RH	1
4	SMW-0136	Bed Mounting Bracket	2
5	SMW-0152 LH	Bed Frame Bracket Rear - Basic LH	1
6	SMW-0152 RH	Bed Frame Bracket Rear - Basic RH	1
7	SMW-0141	Bed Strut Rivnut Plate A	2
8	SMW-0142	Bed Strut Rivnut Plate B	2
9	M-0013	Spacer	2
10	Rivet	4 x 12mm	4
11	Rivet	4 x 8mm	6
12	CSK Rivet	4 x 8mm	20
13	Self Drilling Pan Screw	4.2 x 13mm	6
14	Washer	M8	30
15	Button Head Bolt	M8 x 20mm	18
16	Button Head Bolt	M8 x 80mm	2
17	Nyloc Nut	M8	10

**What's in the box?**

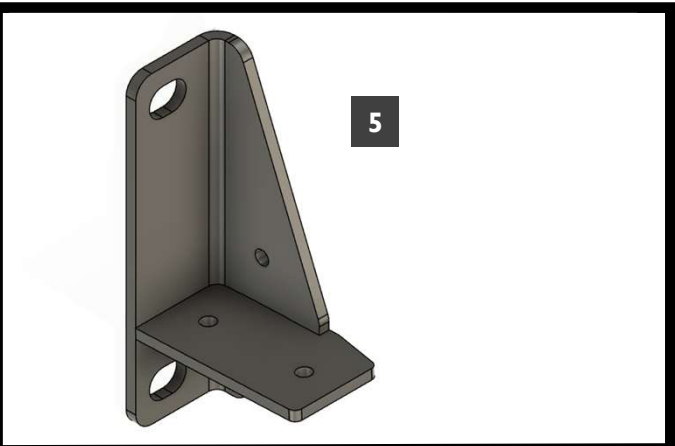
The various kit options and their parts are noted in the table with a diagram on the following pages.



# INSTRUCTIONS VERTICAL STRUT KIT



# INSTRUCTIONS VERTICAL STRUT KIT

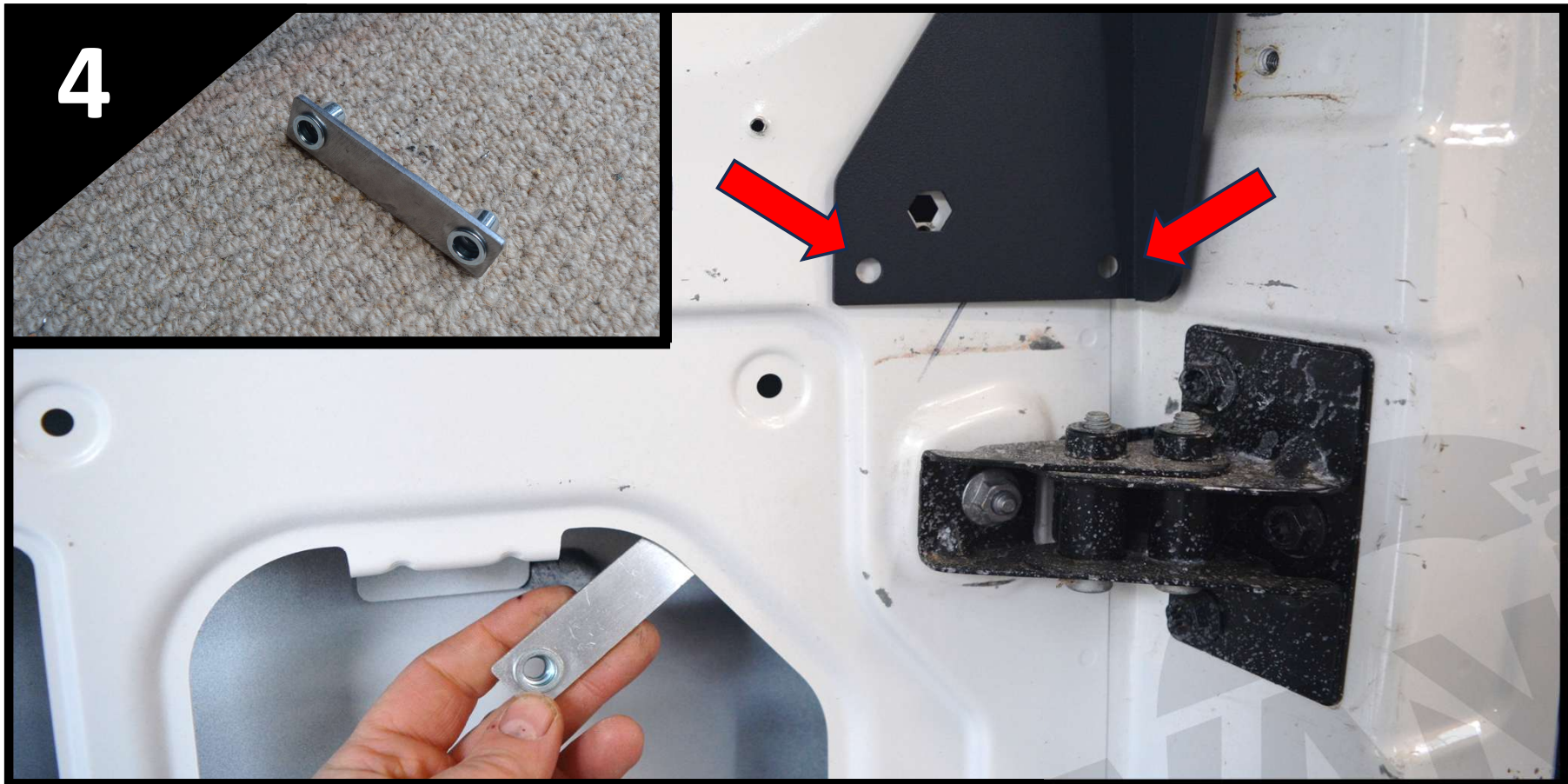


# INSTRUCTIONS VERTICAL STRUT KIT



- Take the Bed Strut Vertical Rear RH and offer up to the rear corner of the van, aligning the hexagonal hole with the hole in the bodywork.
  - Align the bottom horizontal edge of the strut with the horizontal edge in the van bodywork
- Temporarily fix the strut to the van using 2x 4.2x13mm self drilling screws through a rivet hole at the top and one at the bottom.

# INSTRUCTIONS VERTICAL STRUT KIT



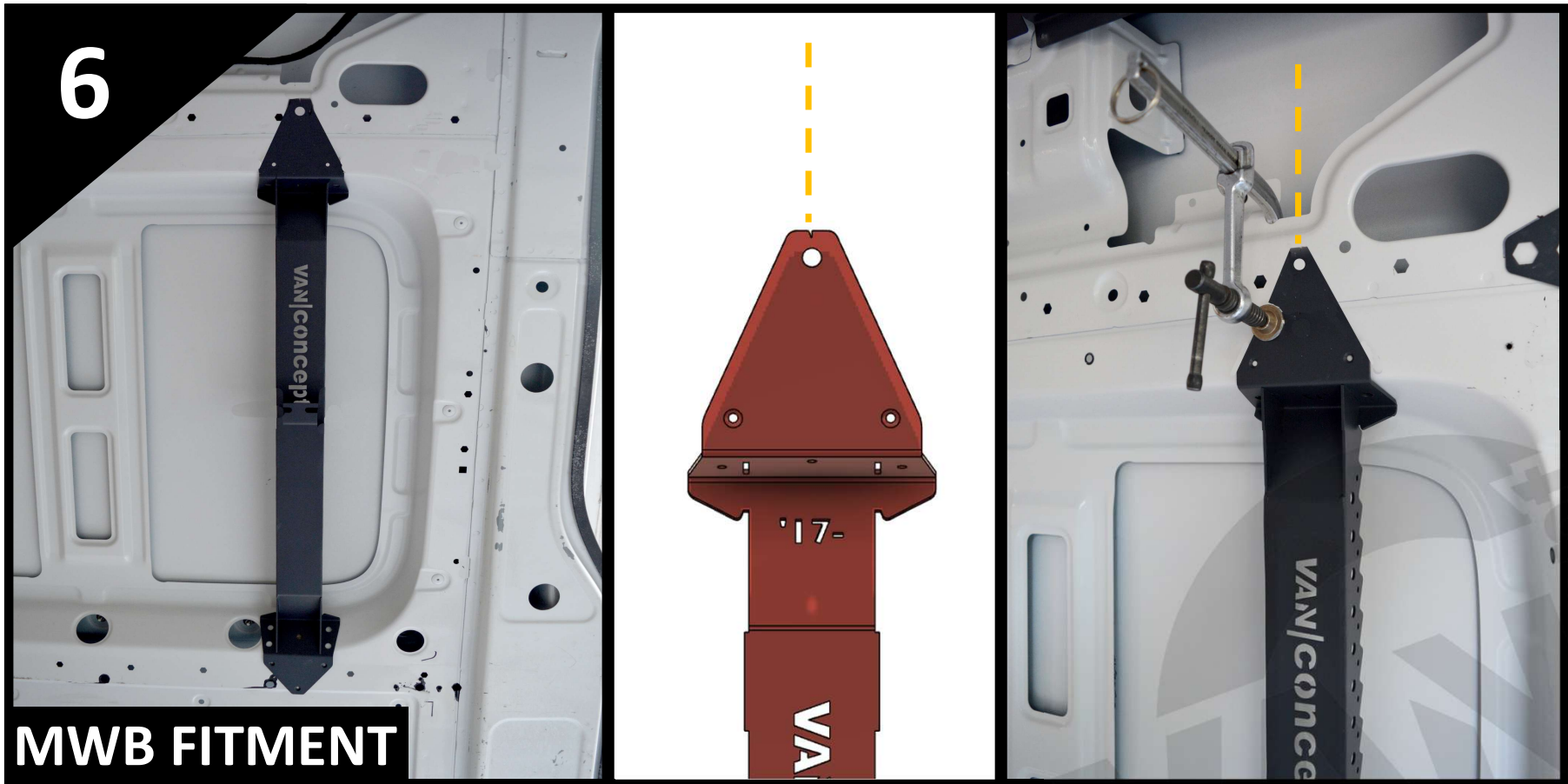
- The rear strut is correctly aligned when the bottom edge is parallel with the bodywork.
- Mark the position of the two lower and one upper mounting holes, along with the four remaining rivet holes, before removing the strut and drilling 4x Ø4.2mm and 3x Ø8.5mm holes, to match those in the strut. *De-burr the holes and we advise applying some anti-corrosion paint to the bare metal.*
- *Re-fit the strut, using 2x M8 x 20mm button head bolts and 2x M8 washers and tighten into Rivnut Plate A on the back of the bodywork, by accessing from underneath.*

# INSTRUCTIONS VERTICAL STRUT KIT

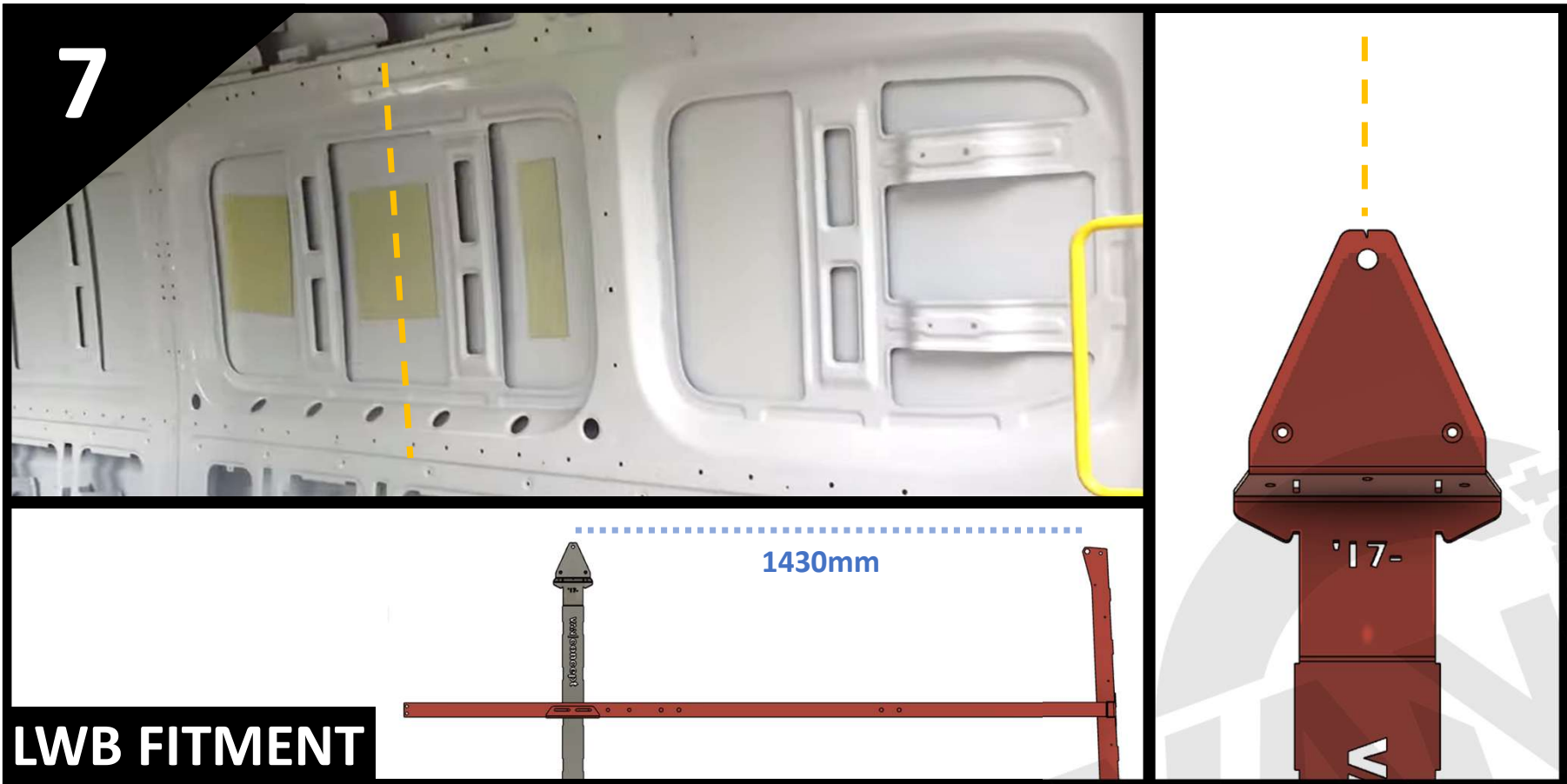


- Fit 1x M8 x 20mm button head bolt with 1x M8 washer through the top mounting hole of the strut and bodywork, then fit 1x M8 washer and 1x M8 nyloc nut on the reverse.
- Remove the self drilling screw and fit 5x 4x8mm countersunk rivets to pull the strut to the bodywork.
  - *Ensure all three bolts are securely tightened.*

# INSTRUCTIONS VERTICAL STRUT KIT



- For MWB vans, offer up 1x Bed Strut Vertical Front to the body just behind the sliding door (left hand side of van shown).
- Align the centre mark on the strut with the edge of the metalwork in the top section (this positioning is not important if not using our bed frame kit) and temporarily fix the strut to the van using 2x 4.2x13mm self drilling screws through the rivet holes, one top and one bottom.
  - *The horizontal edge on the bottom of the strut should align with the horizontal profile on the van bodywork.*



- For LWB vans, offer up 1x Bed Strut Vertical Front to the central recess (right hand side of van shown).
- Align the centre mark on the strut with the edge of the metalwork in the top section, approx. 1430mm forward of the hex hole in the rear strut (this positioning is not important if not using our bed frame kit) and temporarily fix the strut to the van using 2x 4.2 x 13mm self drilling screws through the rivet holes, one top and one bottom.
- *The horizontal edge on the bottom of the strut should align with the horizontal profile on the van bodywork.*

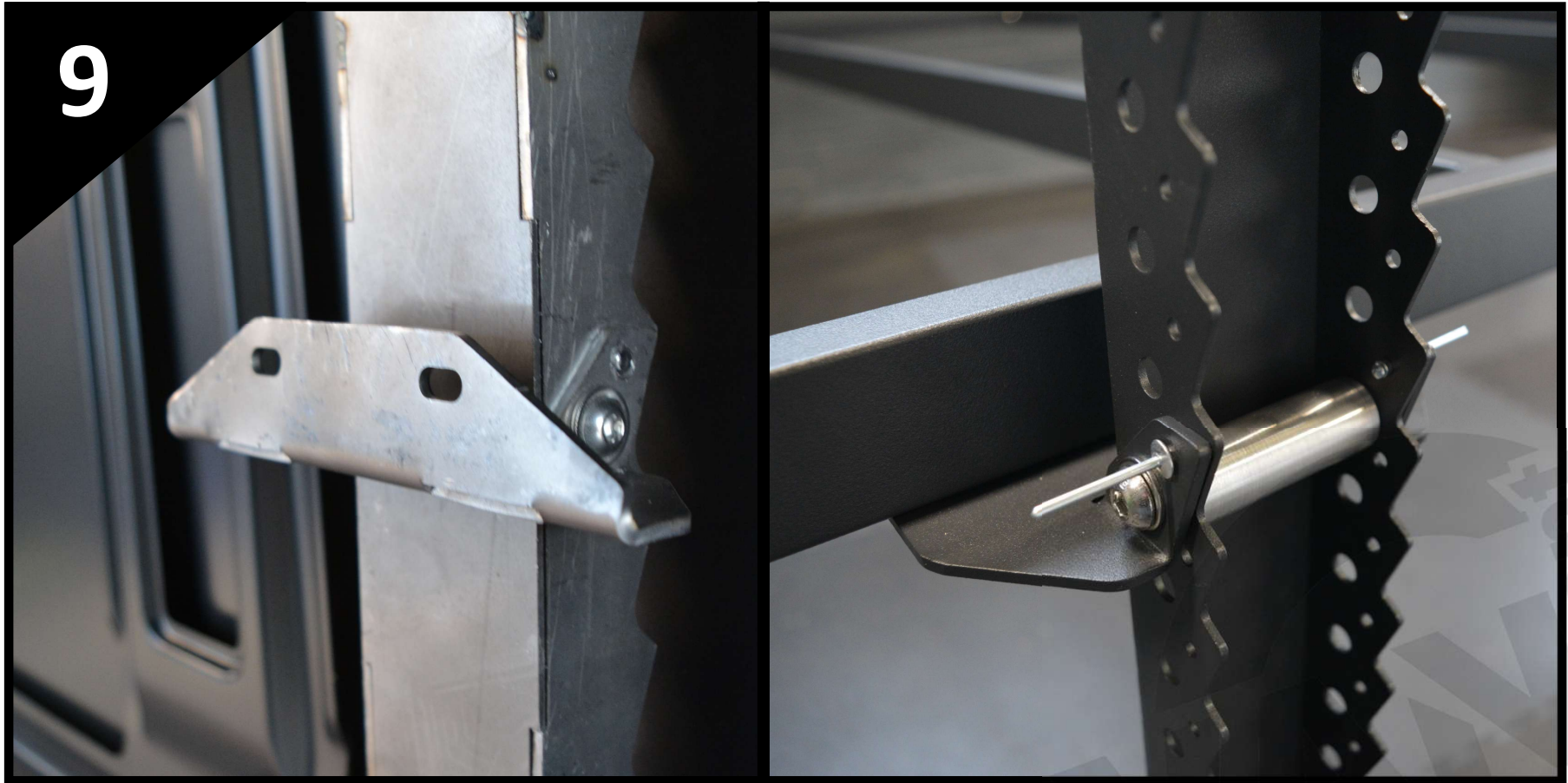


# INSTRUCTIONS VERTICAL STRUT KIT



- Mark the position of the three lower (two won't be useable due to the hole in the bodywork) and one upper mounting hole, along with the four remaining rivet holes, before removing the strut and drilling 8x Ø4.2mm and 4x Ø8.5mm holes, to match those in the strut. De-burr the holes and we advise applying some anti-corrosion paint to the bare metal.
- Re-fit the strut. For the top mounting hole, use 1x M8 x 20mm button head bolt, 2x M8 washers and 1x M8 Nyloc nut, accessed from behind the bodywork. For the bottom mounts, use 3x M8 x 20mm button head bolts and 3x M8 washers and tighten into Rivnut Plate B on the back of the bodywork by placing the rivnut plate as shown.
- Remove the self drilling screws and fit 5x 4x8mm countersunk rivets and 3x 4x8mm rivets on the upper angled face to pull the strut to the bodywork on the vertical surfaces. Ensure all bolts are securely tightened.

# INSTRUCTIONS VERTICAL STRUT KIT



- Repeat the previous steps to fit the struts to the other side of the van.

Choose the height of the bed frame and fit the Bed Mounting Brackets to each front strut, using 1x M8 x 80mm button head bolt and 2x M8 washers, 1x M8 nyloc nut and the M-0013 metal spacer between the two sides as shown. Do this on both sides of the bracket before fitting 2x 4x12mm rivets in the aligned holes.

- Tighten both nuts securely.
- *Now is the best time to fit the ply lining to the van, with just a small cutout required to fit around the Bed Mounting Bracket.*

# INSTRUCTIONS VERTICAL STRUT KIT



- Position the Bed Frame Bracket Rear on the rear vertical strut (left or right, easily identified by the angle on the rear bracket matching the angle of the rear strut) and fit 2x M8 x 20mm button head bolts 2x M8 washers through the mounting holes at the rear of the Side Beam and into the slots on the rear strut. On the reverse side, fit 2x M8 washers and 2x Nyloc nuts to tighten.
- When securing your bed supports on the rear brackets, use the holes in the bracket to rivet or screw the bracket to the supports.